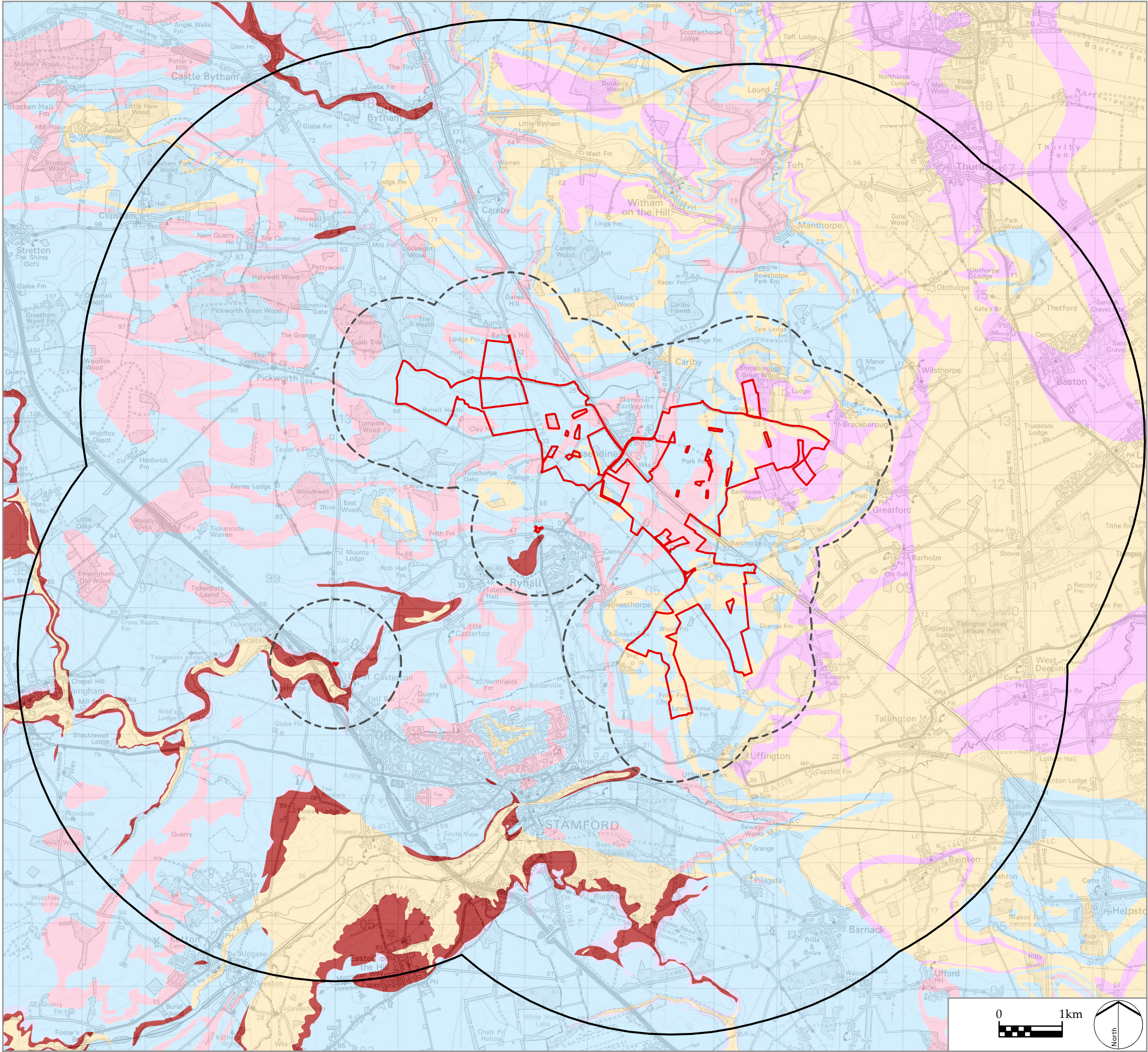


Y:\GIS\HYDROLOGY\PROJECTS\4217 ESSENDINE SOLAR FARM\4217 ESSENDINE SOLAR FARM.APRX



Infrastructure Planning (Applications:
Prescribed Forms and Procedure) Regulations 2009
APFP Regulation: 5(2)(a)

PINS REFERENCE NUMBER
EN010127

LEGEND

- Order Limits
- 1 km Study Area
- Wider Study Area (5 km)

Bedrock Geology (1:50,000)

- ARGILLACEOUS ROCKS WITH
SUBORDINATE SANDSTONE
AND LIMESTONE
- IRONSTONE, OOIDAL
- LIMESTONE
- MUDSTONE
- SANDSTONE AND SILTSTONE,
INTERBEDDED
- SANDSTONE, SILTSTONE AND
MUDSTONE

P0 DCO Submission
REV. DESCRIPTION

RP 06/11/22
APP. DATE

PROJECT TITLE

MALLARD PASS SOLAR FARM

DRAWING TITLE

Figure 11.2: Illustration of Solid Geology

ISSUED BY	Oxford	T: 01865 887050	
DATE	Nov 2022	DRAWN	PH
SCALE @A3	1:60,000	CHECKED	SC
STATUS	Final	APPROVED	LN

DWG. NO. 4217-REP-011 REV: P0

No dimensions are to be scaled from this drawing.
All dimensions are to be checked on site.
Area measurements for indicative purposes only.

© LDA Design Consulting Ltd. Quality Assured to BS EN ISO 9001 : 2015

Sources: Ordnance Survey